



*The Master can use what you have to offer,  
Though you may consider it small;  
His work here on earth is done through his children,  
So give Him your best, give your all.*

*-Hess*

**Sponsoring Congregations**

- Asbury Mt. Olive UMC
- Brookwood Covenant
- Central Congregational
- Countryside UMC
- Crestview UMC
- Faith Lutheran
- Fairlawn Nazarene
- First Baptist
- First Congregational
- First Christian
- First Lutheran
- First Presbyterian
- First United Methodist
- Grace Episcopal Cathedral
- Grace UMC
- Lowman UMC
- Most Pure Heart of Mary
- Our Savior's Lutheran
- Prince of Peace Lutheran
- St. David's Episcopal
- Susanna Wesley UMC
- Town & Country Christian
- Trinity Evangelical Lutheran
- Trinity Presbyterian
- University UMC
- Westminster Presbyterian
- West Side Baptist
- West Side Christian
- Community Partners**
- Aldersgate Village
- Atria Hearthstone
- Brewster Place
- Comfort Keepers
- Hospice Care of Kansas
- McCrite Plaza
- Midland Care
- St. Francis Senior Spirit
- Stormont-Vail Healthwise 55
- Thornton Place

Fall 2009 Issue No. 12

**Register NOW for the Shepherd's Center fieldtrip to Camp Chippewa, Oct. 10th.**



**Camp Chippewa, near Lake Pomona, is the perfect setting for a fall outing. Formerly a U.S. Indian Reserve for the Chippewa Indians, this camp ground is owned by the KS**



**Methodist Conference. While the grounds are populated with youth during the summer, Shepherd's Center members will enjoy a quiet fall setting and educational opportunity. Bus transportation will be provided by Aldersgate. We will leave the First Baptist parking lot at 9:00 a.m. on Saturday, Oct. 10, '09. We will arrive around 10:00 a.m. and have brunch in Wolf Den.**

**Our morning speaker, Pastor Larry Bowyer, will not only tell about the history of the area but also accompany us on a wagon tour through the countryside, pointing out locations where artifacts have been found. Upon return, members have their choice of activities until 4:00 — to fish, do archery (\$3 extra), take a bird watching/nature walk (bring binoculars) with Carol Morgan, Topeka Audubon Society (SCT member Sharon Eulert's daughter); or take the bus into Ottawa to go antiquing.**

**From 4-6:00 p.m. we will have a campfire and weenie roast at Coldsmith Lodge, listen to some guitar music and have a devotional—returning to Topeka around 7:00 p.m. Find a link to Camp Chippewa on the front page of the SCT website.**



**Cost for this "elder-hostel"- type experience is \$25 per person. Space is limited; registrations must be made by Sept. 1, so please mark the *Adventure's in Learning* form.**

**BREWSTER FIELDTRIP August 21st (see Page 3)**

## A Little Discussion with the Director



Debra Stufflebean

I want to tell you how Shepherd's Center is a **Ministry**, because it makes a difference in how we view our financial giving.

When I see people like my husband, who are not well enough to work but willing to volunteer, I give thanks for this ministry.

Everything I do at SCT is intended to feed His sheep. The mission field can be different for different people. I was hired to serve people like YOU so that these years of your life are fun, educational, spiritually renewing, and occasionally physically challenging. But it only works when those who participate extend the hand of fellowship to others in our community.

If this is the type of ministry that you can stand behind, then "*getting your money's worth*" becomes a moot point. Every session we have people send in money who will not be able to attend; and every session we have some folks who attend who do not pay.

I would like members to consider how quarterly SCT registration is similar to a magazine subscription. Whether or not one has time to read every issue doesn't change the amount you pay for the subscription. Ideally, you'd like to have time to peruse each issue, just as we would like to attend every Friday of every session, but some Fridays you may only be able to come to one class or you may have to skip the meal. Even if you can only come two Fridays, you still participate in four classes, two musical programs and two meals for \$25!

Besides, that \$25 is needed to ensure that the ministry of the Shepherd's Center will continue in our community.

Since the first of the year, Mike and I have visited all of the 28 congregations who sponsor Shepherd's Center. As a faith community, we're not so different. Interestingly, everywhere we went, we found God.

I enjoy learning about the ministries of the various churches, and I am very delighted when I see the Shepherd's Center listed as an outreach ministry for that church. I will do whatever I can on behalf of SCT to promote our sponsoring congregations and have created a website where congregations can submit invitations to events at their churches. At SCT, we recruit volunteers, schedule speakers, and select musicians to be inclusive of people who represent all churches who make up SCT.

Finally, I am excited that some churches are automatically sending an annual financial gift to support SCT. That shows me that they believe in what we are trying to accomplish, and that they too, feel that a ministry that nurtures aging adults is important.

May God richly bless our membership, sponsoring churches, and our faithful community partners who in turn give me the opportunity to serve in this

**Ministry.**

—Debra

I had a lady call me that had recently moved to Topeka to be near her son and didn't know anyone else. She read about SCT in the newspaper. Every time I see her at SCT she thanks me for finding this wonderful place.

I had both a man and a woman (one on the phone; one in my office) talk to me about SCT because they had both lost their spouses in the past six months and needed something to help fill the void.

I have pulled people aside who looked flushed and were perspiring; or sadly, seemed disoriented to discuss medical assistance. It never hurts to have another set of eyes observing.

I had a woman start volunteering who really missed being employed but didn't feel like she fit in in other places she had tried.

Many members are talented presenters, and I am filled with pride when they lead a class—which they may not have done in years—at an *Adventures in Learning* session.

## BREWSTER PLACE FIELDTRIP Register by August 14th

SCT members will have a fun outing in downtown Topeka this month. We will leave the First Baptist parking lot at 9:45 on Friday **August 21**. Our tour begins at First Presbyterian Church where we will view the Tiffany windows. Afterwards, we will split into two groups and take turns touring Hazel Hill Chocolates to see how chocolates are made and Marion Lane Candles to see how candles are made. Then it's on to lunch at a downtown restaurant; returning around 1:30—2:00 p.m. Transportation, tour and lunch on the town are all compliments of:

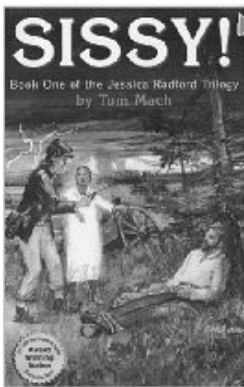


## Newly Designed Website Clicking [www.shepherdscentertopeka.org](http://www.shepherdscentertopeka.org)

Did you know that when you go to the Shepherd's Center website, if you right click with your mouse any place on the home page, a box will open up with choices? Click on "create shortcut" and it will ask if you would like Shepherd's Center put on your desktop, click "yes." Doing so will make it easier for you to check announcements located on the lower half of the home page, as well as read about events posted in the left-hand columns of the sponsors' pages. Hot links to many local attractions are at your fingertips, just a click away. And don't forget that extra registration forms can be printed from our website.

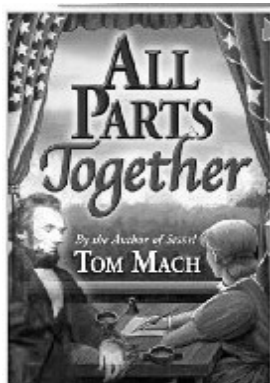
- Create shortcut
- Add to favorites
- View Source

## BOOKS FOR SALE



Tom Mach is the author of two books in the Jessica Radford trilogy. He is presently working on his third book concluding the saga. In **Sissy**, Jessica's parents are murdered by border ruffians. She disguises herself as a Civil War soldier in order to avenge their deaths, but is stopped by an angel.

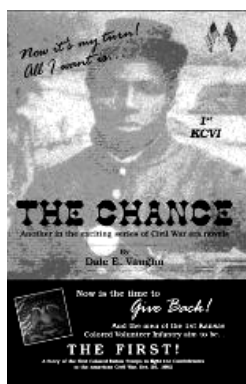
In the second book, **All Parts Together** Jessica is inspired to write after meeting Walt Whitman. She writes about the emancipation of slaves; and is devastated when she witnesses the assassination of President Lincoln in Ford Theater. Both books may be ordered from [www.amazon.com](http://www.amazon.com). Click on books, and type in the title. Mach will be speaking at Shepherd's Center on Sept. 4th.



*It's fun to read a book before you hear an author speak; books may be ordered on-line.*

Author Dale Vaughn loves his boys, referring to the 1st Kansas Colored Volunteer infantry. **The Chance** follows the flight from Virginia to freedom in Kansas of Elias Mothers, a young black boy who decides it is his duty to help pay for that freedom by joining General James Lane's black regiment in 1862—the first black troops to fight in uniform in the Civil War. Vaughn will discuss researching and writing this action adventure novel on Sept. 25 at the Shepherd's Center. Books may be purchased via email:

[nandale@networksplus.net](mailto:nandale@networksplus.net) or online at [www.amazon.com](http://www.amazon.com).



### Chippewa—Christ's Camp, 50 years of Faith and Fun

was written by Pastor Larry L. Bowyer. Larry will be our speaker and tour guide for our October fieldtrip. His book is filled with sketches, poems and memories of God's working in Camp Chippewa. It is dedicated to the memory of Barbara Ellen Funk who was killed in a car-train accident in 1955. Barbara's parents donated the land that had been their family's inheritance to KS Methodist Conference in 1958. "Camp is not just for finding fun, faith and friends but also for leaving some things behind like troubles, sorrows & hurt." Purchase the \$6 book on-site during the fieldtrip.



# “Adventures in Learning” September Class Catalog

**Sept. 4, 2009**  
**9:15—10:15 a.m.**  
**News & Views**

Kevin McFarland leads a lively current events discussion every Friday in session. Topics can run from City Council issues to national politics. Kevin stays abreast of the news and asks for YOUR views. This is a fun and candid exchange of ideas where opposing viewpoints are appreciated.

**Sept. 4, 2009**  
**9:15—10:15 a.m.**  
**Religion**



**Life of Martin Luther**

Carl Nuzman will present info on the personal life of Martin Luther and his wife, Catherine, whose home was at 200 Fin, Saxony, Germany which Carl & Janet have toured.

**Sept. 4, 2009**  
**9:15—10:15 a.m.**  
**Art/Literature**

**Bringing the Civil War to Life**

Author Tom Mach has a passion for bringing the civil war to life through the voices of his fictional and historical characters. Author of Sissy and All Parts Together (see page 3).



**Sept. 4, 2009**  
**10:30—11:30 a.m.**  
**Community**

**Lion’s Club Travel Series**

Get a taste of the popular Lion’s Club travelogue as Barbara Smith gives a sneak peek of this year’s series with clips from Egypt, Mesoamerican jungles, Iran, Italy, Yellowstone National Park & the Rocky Mountains.

**Sept. 4, 2009**  
**10:30—11:30 a.m.**  
**Health**

**Cardiac and Vascular Diseases: The New Age of Prevention, Treatment and Life Options**

Cardiovascular disease is the #1 killer in the U.S. Early detection is vital. Hear Chris Lipp, Director of Cardio/Vascular Surgery at St. Francis HC.

**Sept. 4, 2009**  
**10:30—11:30 a.m.**  
**People & Places**



**Walt Disney: Mouse Magic**

Clyde Kensinger will share how one man helped a nation escape the depression by making them laugh; then brought happiness into a tangible Kingdom.

**Sept. 4, 2009**  
**11:40—12:10 p.m.**  
**Miscellaneous**

**Annual SCT Meeting / Community Concert Preview**

In accordance with our bylaws, we will have a short annual meeting, followed by a viewing of the CD made to promote Shepherd’s Center and a video from Bill Anderson promoting the coming Community Concert Season.  
**Link to purchase memberships on front page of SCT website.**

**Sept. 11, 2009**  
**9:15—10:15 a.m.**

**News & Views**

Current Events Discussion w/ Kevin McFarland

**Sept. 11, 2009**  
**9:15—10:15 a.m.**  
**Religion**

**My Life with Saint Francis of Assisi**

The year is 1250! John Myers portrays Brother Gianni Nudisto, friend and follower of St. Francis, telling of his life, legends, and founding of the Franciscan Order.



# “Adventures in Learning” September Class Catalog

**Sept. 11, 2009**  
**9:15—10:15 a.m.**  
**Art/Literature**

**Dollmaking—Porcelain Greenware to Costumed Doll**

Dr. Gene Hicks always enjoyed dolls, design and sewing so after retiring as the first woman public school superintendent, she began the artistic endeavor of restoring and creating dolls.



**Sept. 11, 2009**  
**10:30—11:30 a.m.**  
**Community**

**Findables—More than just a Store**

Nancy Buckingham Harms will share with us what drew her into the world of RESALE to create a benefit for Midland Care Hospice Services. Class includes a live fashion show and terrific discount coupons!

**Sept. 11, 2009**  
**10:30—11:30 a.m.**  
**Health**

**New Stormont-Vail Emergency & Trauma Dept.**

Angela Gamber is the Administrative Director of Emergency and Trauma at Stormont-Vail. She will discuss recent building changes and new trauma unit.



**Sept. 11, 2009**  
**10:30—11:30 a.m.**  
**People & Places**

**Museum of Military History**

One of the best kept secrets in Topeka is the museum at the north end of the Ramada Inn on military history. Jerry Holley maintains the museum and will share why it was created and the background of its exhibits.

**Sept. 11, 2009**  
**11:40—12:10 p.m.**  
**Music**

**Variety of Hymns in a Variety of Styles**

Chelsea Vaught gets what “making a joyful noise unto the Lord” is all about. She is Director of Music at 1st Congregational and will play hymns in a variety of styles: jazz, blues, you name it!



**Sept. 18, 2009**  
**9:15—10:15 a.m.**

**News & Views**

Current Events Discussion w/ Kevin McFarland

**Sept. 18, 2009**  
**9:15—10:15 a.m.**  
**Religion**

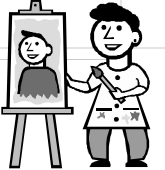
**Love without Boundaries**

Love Without Boundaries Foundation is a worldwide group of volunteers dedicated to improving the lives of orphaned children in China. Nurse Julie Unruh will discuss her trip to China to provide cleft pallet surgeries that increases the likelihood of these little ones being adopted.

**Sept. 18, 2009**  
**9:15—10:15 a.m.**  
**Art/Literature**

**Creativity and Self-Expression**

How can someone who hasn't picked up a crayon since kindergarten learn to express themselves through art? [Talent is highly over-rated.] Learn from Libby Schmanke, art therapist & artist, how to jump-start creativity.






**Sept. 18, 2009**  
**10:30—11:30 a.m.**  
**Community**

**Our Judicial System—Crime & the Community**

KS District Court Judge Thomas Conklin will explain the workings of our judicial system and the affect the economy has on crime in our community.



## “Adventures in Learning” September Class Catalog

<p><b><u>Sept. 18, 2009</u></b>  <b>10:30—11:30 a.m.</b>  <b>Health</b></p>	<p><b>Dizziness and Balance Disorders</b></p>	
<p><b><u>Sept. 18, 2009</u></b>  <b>10:30—11:30 a.m.</b>  <b>People &amp; Places</b></p>	<p><b>At the Helm of 501</b></p>	
<p><b><u>Sept. 18, 2009</u></b>  <b>11:40—12:10 p.m.</b>  <b>Music</b></p>	<p><b>Mini Organ Concert</b></p>	
<p><b><u>Sept. 25, 2009</u></b>  <b>9:15—10:15 a.m.</b></p>	<p><b>News &amp; Views</b></p>	
<p><b><u>Sept. 25, 2009</u></b>  <b>9:15—10:15 a.m.</b>  <b>Religion</b></p>	<p><b>Lessons from Mayberry</b></p>	
<p><b><u>Sept. 25, 2009</u></b>  <b>9:15—10:15 a.m.</b>  <b>Art/Literature</b></p>	<p><b>1st Kansas Colored Volunteer Infantry in the Civil War</b></p>	
<p><b><u>Sept. 25, 2009</u></b>  <b>10:30—11:30 a.m.</b>  <b>Community</b></p>	<p><b>Clean Air Topeka: The Dangers of Second-hand Smoke</b></p>	
<p><b><u>Sept. 25, 2009</u></b>  <b>10:30—11:30 a.m.</b>  <b>Health</b></p>	<p><b>Wholistic Health—Naturopathic Medicine</b></p>	
<p><b><u>Sept. 25, 2009</u></b>  <b>10:30—11:30 a.m.</b>  <b>People &amp; Places</b></p>	<p><b>Coins—Collecting &amp; Investing</b></p>	
<p><b><u>Sept. 25, 2009</u></b>  <b>11:40—12:10 p.m.</b>  <b>Music</b></p>	<p><b>The Life &amp; Songs of Irving Berlin</b></p>	

Dizziness, or vertigo, is the third most common medical complaint after headaches and backaches. Dr. Gary McKnight will discuss new treatments for this disorder.

Dr. Kevin Singer will talk about his career path in education, his background (being a product of Topeka schools), and focus for the future of 501 District.

Jerry Anderson returns this session to play the “hymns you like to sing.”

Current Events Discussion w/ Kevin McFarland



Rev. Neil Engle uses video clips from the Andy Griffith show to explore the values we were taught from Andy, Barney, Opie, Aunt Bee, Gomer, Goober, Otis and Floyd.

Author of The Chance, Dale Vaughn tells a story seldom told about brave men that fought for a nation that had not yet accepted them (see page 3).

Gary Caruthers discusses efforts to get the city council to pass a Clean Indoor Air Ordinance restricting smoking in public places, using research to show the harmful effects of second-hand smoke.

Dr. Peter Kimble will introduce naturopathic medicine that focuses on natural remedies and the bodies vital ability to heal and maintain itself. Dr. Kimble will describe the “perfect diet” for good health.



Do old coins have value? What factors determine value? Are coins a good investment? Numismatist Steve Neher owns Kansas Coin Connection in Lawrence.

Hundreds of songs may be attributed to Irving Berlin, including “God Bless America” and “White Christmas.” Soloist Marty Edwards shares some of her favorites, with an opportunity to sing along!

## MAHALO BANQUET for VOLUNTEERS



Aloha! is a Hawaiian greeting that embodies love, affection and compassion. Just as Paul's letters to the New Testament Churches began with "Greetings," so to begins this invitation. Many volunteers make Shepherd's Center a success. Members must be committed and be dependable in carrying out specific tasks that are needed by this one-woman staff. It doesn't matter how large the responsibility, each person contributes to the whole, just as we each make up the body of Christ. For that reason, I wish to show Mahalo, Hawaiian for "gratitude," to SCT volunteers with a banquet in their honor .

You are cordially invited to the Mahalo Banquet for Volunteers

On Friday, November 6, 2009 @ 5:30 p.m.

Waterford Dining Room at McCrite Plaza, 1610 SW 37th Street

As we gather, enjoy tasty Sweet & Sour Lemonade

and Piano Music by Betty Lippe for your listening pleasure

Menu: Hawaiian Chicken with Maui Rice, Island Pineapple Fruit Kabobs

Ginger Honey Glazed Carrots, Split Dinner Roll

Palm Paradise Parfait Dessert, Iced Tea, Coffee

Guest Speaker: Maggie Kelley from I'm Ok Laughter Club

Special Thanks to the Staff at McCrites:

Jamie Dultmeyer, Director of Marketing

Connie Michaelis, Director of Public Relations

Chef John Jackson, Food Service

Provided by our Sponsor



Clip & Send

Banquet Registration **Due by September 25, 2009.**

Return your RSVP to Shepherd's Center Office, 3033 SW MacVicar, Topeka, KS 66611

Name(s) of Attending: \_\_\_\_\_

I (We) have volunteered in the following area (Please Circle):

Registration/Newsletter    Program Planning/Facilitating    Hospitality (Parlor/Dining)

Facility Mgmt (tables, chairs, trash)    Audio/Visual    Office (Calling/Filing)    Board Member



## September 4, 2009

9:15—10:15 a.m.

Life of Martin Luther—Carl Nuzman

Civil War History—Tom Mach

News & Views—Current Events Discussion  
with Kevin McFarland

10:30—11:30 a.m.

Lion's Club Travel Series—Barbara Smith

Cardiovascular Care—Chris Lipp

Walt Disney—Clyde Kensinger

11:40—Annual SCT Meeting

Topeka Community Concert Promotion

## September 11, 2009

9:15—10:15 a.m.

Life of St. Francis—John Meyers

Dollmaking—Gene Hicks

News & Views—Current Events Discussion  
with Kevin McFarland

10:30—11:30 a.m.

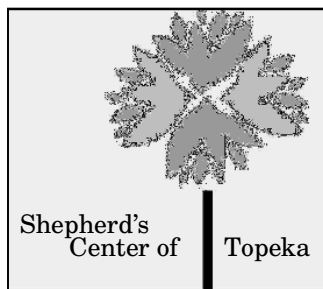
Findables—Nancy Buckingham Harms

Stormont-Vail Trauma Unit—Angela Gamber

Military Museum—Jerry Holley

11:40—Sanctuary Music

Pianist Chelsea Vaught



Hosted at

First Baptist Church  
3033 SW MacVicar  
Topeka, KS 66611  
785-267-0248

## FALL 2009

### “ADVENTURES IN LEARNING”

8:30—9:00 Lower Level

**Blood Pressure Check—Health Info** by



*Hospice Care of Kansas*

**Walking to Rock'n Rhythm—Gym**

9:00—10:30 Parlor, Upper Level

**Refreshments** by



12:15—1:00 Lower Level

**Buffet Luncheon** by



Questions? [shepherdstopeka@yahoo.com](mailto:shepherdstopeka@yahoo.com)

## September 18, 2009

9:15—10:15 a.m.

Love Without Boundaries—Julie Unruh

Creativity/Self-Expression—Libby Schmanke

News & Views —Current Events Discussion  
with Kevin McFarland

10:30—11:30 a.m.

Our Judicial System—Judge Tom Conklin

Dizziness & Balance—Dr. Gary McKnight

At the Helm of 501—Dr. Kevin Singer

11:40—Sanctuary Music

Mini Organ Concert—Jerry Anderson

## September 25, 2009

9:15—10:15 a.m.

Lessons from Mayberry—Rev. Neil Engle

1st KS Colored Infantry — Dale Vaughn

News & Views —Current Events Discussion  
with Kevin McFarland

10:30—11:30 a.m.

Clean Air Topeka—Gary Caruthers

Wholistic Health—Dr. Peter Kimble

Coin Collecting—Steve Neher

11:40—Sanctuary Music

Soloist—Marty Edwards

**Registration:** Mail completed registration form to SCT, 3033 SW MacVicar Ave, Topeka, KS 66611, along with check payable to SCT. Check Box if New or Changed Info. >

Name (s) \_\_\_\_\_ Phone # \_\_\_\_\_

Address/Zip \_\_\_\_\_

E-mail: \_\_\_\_\_ Home Congregation: \_\_\_\_\_

**Registration fee of \$25 includes 8 classes in "Adventures in Learning," 4 musical programs, 4 catered lunches, and field trips between sessions. Now that's a bargain!**

Number of Registrations \_\_\_\_\_ x \$25.00 = \$ \_\_\_\_\_

Donation to this ministry = \$ \_\_\_\_\_

Total Number of Lunches for all Fridays \_\_\_\_\_ x .00 = **FREE**

Please check which Fridays you will be eating.

(First Fri. \_\_\_ ; Second Fri. \_\_\_ ; Third Fri. \_\_\_ ; Fourth Fri. \_\_\_) \$ \_\_\_\_\_ Check Total

**Fieldtrip Sign Up:** Brewster Fieldtrip Friday, August 21 \_\_\_\_\_ (**due Aug. 14**)

Camp Chippewa Fieldtrip Saturday, October 10 \_\_\_\_\_ x \$25 per person **PREPAY** (due Sept. 1)

**Class Selection:** Each person choose two classes per Friday (select one from the three classes listed in each time slot). This will help us with room assignments.

**September 4, 2009**

9:15-10:15	Martin Luther	_____
	Civil War History	_____
	News & Views	_____
10:30-11:30	Lion's Travel Films	_____
	Cardiovascular	_____
	Walt Disney	_____

**September 11, 2009**

9:15-10:15	St. Francis	_____
	Dollmaking	_____
	News & Views	_____
10:30-11:30	Findables	_____
	S-V Trauma Center	_____
	Military Museum	_____

**September 18, 2009**

9:15-10:15	Love Without Bounds	_____
	Creativity	_____
	News & Views	_____
10:30-11:30	Judicial System	_____
	Dizziness/Balance	_____
	Helm of 501	_____

**September 25, 2009**

9:15-10:15	Lessons from Mayberry	_____
	1st KS Colored Infantry	_____
	News & Views	_____
10:30-11:30	Clean Air Topeka	_____
	Wholistic Health	_____
	Coin Collecting	_____

**PLEASE RETURN BY AUGUST 21ST or SOONER. THANKS!**

## Guest Policy

Everyone (member or guest) must register to attend an “*Adventures in Learning*” session. First time visitors MUST call the SCT office, 267-0248, by Tuesday if they plan to attend that Friday so we will have an accurate lunch count and have a name badge for them in the registration foyer. Visitors may come **ONCE** without paying, but then must pay the \$25 registration fee to come any additional Fridays that session. We should encourage others to come and give SCT a try—it costs them nothing to check it out to see if this is the type of program they would enjoy. By providing their address and phone #, guests will receive the SCT newsletter for one year.

(Scholarships may be available for those who have a financial need—visit with the Director or your Pastor.)

## SUMMER SESSION

We had 172 registered for our first summer session, and perhaps even more importantly, we had 20 first time guests.

## FALL—WINTER SESSIONS

In the event of inclement weather, we will follow the school closing policy of 501 District. Listen to radio/television news. If 501 closes classes, there will be no Shepherd’s Center Classes.

## DONATED BOOKS



If your church would like copies of Debra’s book, *A Star Worth Sharing*, for the church library or to sell as a youth fundraiser, call the office, 267-0248. (Suggested price \$8) She will fill as many requests as she can from the publisher’s remainder without charge. For book info—[www.kansaswriter.com](http://www.kansaswriter.com).

## THANK YOU!



Thank you to the following sponsoring congregations who have sent in financial support for 2009.

- Brookwood Covenant
- Central Congregational
- Grace Episcopal Cathedral
- Grace United Methodist

## ROYAL’S Fieldtrip 7/17/09

What can we say? We had a ball! The Royal’s were ahead most of the game but lost to Tampa Bay. The weather was wonderful as you can see from the light jackets. The new stadium is worth the trip. Friday night fireworks were the icing on the cake.

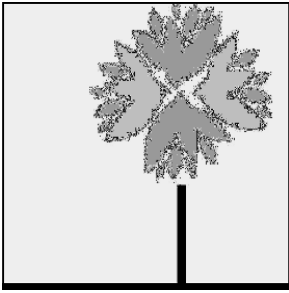


Thank you to our sponsor, Atria Hearthstone, who drove three buses and plied us with croissant sandwiches, chips and pudding parfaits.

**As always, we thank Atria for continuing to provide meals for SCT sessions.**

## Kansas Senior Olympics

The schedule and registration forms for the Senior Olympics are available through the Parks and Recreation office. Individual competitions are Sept. 23-27; Team sports are Oct. 1-4, 2009. Contact Becky Sewell at 368-3798 or by email: [bsewell@topeka.org](mailto:bsewell@topeka.org). Volunteers are also needed to work the events.



Shepherd's Center of Topeka  
 3033 SW MacVicar Avenue  
 Topeka, Kansas 66611-1899

NONPROFIT ORG  
 US POSTAGE  
 PAID  
 TOPEKA KS  
 PERMIT NO 10

**OR CURRENT RESIDENT**

If you wish to be deleted from our mailing, please call 267-0248.

**Awesome Adventures Coming Your Way**



Shepherd's Center is sponsoring a day trip through **Awesome Adventures, LLC**, to the Christmas Pageant at Raytown, MO Baptist Church on **December 6, '09**. We will board the

bus at the First Baptist Church parking lot at 12:30 that Sunday. The pageant is from 3:00-5:00 p.m., followed by a buffet dinner. **Shepherd's Center Members have until September 1 to make reservations for this trip before it is open to others in the community. The cost is \$40 per person, or \$35 per ticket for SCT members.** You may pay at the time of registration or have until Nov. 13th to mail your check to the SCT office. Please make checks payable to Shepherd's Center. **DO NOT WAIT TO MAKE THE RESERVATION.** This trip was proposed by the Director after receiving tickets from a daughter last year. The play is absolutely breathtaking and seeing Christ on his thrown being worshipped by his angels will be one of the most memorable things you will ever see. We believe that tickets will go quickly. Travel questions? Contact Mary Rowsome, **233-4488**.

CLIP

**Shepherd's Center Member Discount**  
**5% off per person travel price (\$5 min.)**  
**Mary Rowsome, Awesome Adventures LLC**  
**[awesomeadventures@sbcglobal.net](mailto:awesomeadventures@sbcglobal.net)**